

# WEED OF THE WEEK

*SETARIA FABERI*



## Foxtail: Giant Foxtail

*Photos from Weeds of the Cranberry Marsh.*

**life cycle / growth habit:**  
*summer annual to 4 ft. tall*



seedheads

**root:**  
*tuft of fibrous roots*

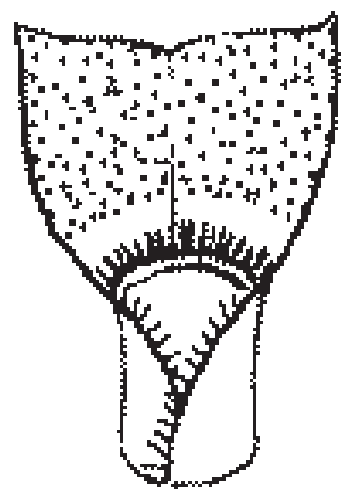


established  
stand

**stem:**  
*erect or drooping at tip,  
many stems from base*

**leaf:**  
*large leaves often over 3/4  
in. wide, hairy on upper  
surface, and along sheath  
margin*

**flower:**  
*drooping foxtail-like  
inflorescence up to 8 in.  
long, with many long hairs*



Giant Foxtail's  
hairy ligule and  
sheath margin

**fruit/seed:**  
*seeds green to yellow,  
about 1/8 in. long , ripening  
and falling September–  
October*

**habitat:**  
*weed of disturbed, medium to dry soil, common along  
marsh roadways*

# WEED OF THE WEEK

*SETARIA PUMILA*



## Foxtail: Yellow Foxtail

*Photos from Weeds of the Cranberry Marsh.*

**life cycle / growth habit:**  
*summer annual to 2 ft. tall*



seedhead

**root:**  
*tuft of fibrous roots*

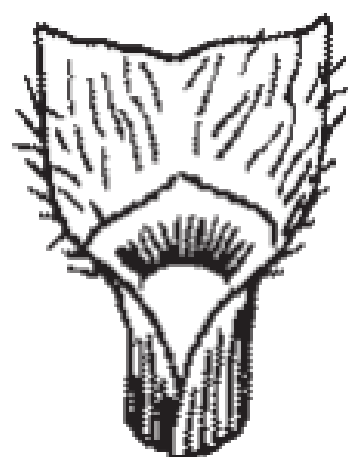


plant detail and  
established stand  
(left to right)

**stem:**  
*erect, leafy, single or  
clumped*

**leaf:**  
*slender, usually under 1/2 in. wide  
flower spike-like inflorescence to  
3 in. long, held erect, with many  
short, golden hairs*

**flower:**  
*July–September*



**fruit/seed:**  
*seeds green to yellow  
under 1/8 in. long*

hairy ligule, leaves have  
long hairs on upper  
surface at base of  
blade; no hairs on  
sheath margin

**habitat:**  
*common weed of roadsides, dry waste places*

# WEED OF THE WEEK

*SETARIA VIRIDIS*



## Foxtail: Green Foxtail

*Photos from Weeds of the Cranberry Marsh.*

**life cycle / growth habit:**  
*summer annual to 6 ft. tall*

**root:**  
*tuft of fibrous roots*



seedhead

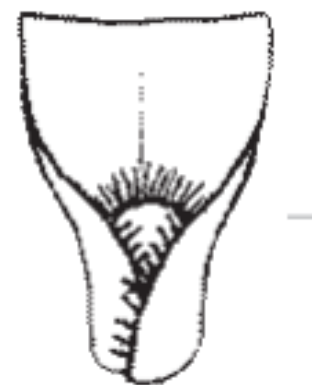


plant detail

**stem:**  
*erect, leafy, single or clumped  
leaf large leaves often over  
1/2 in. wide, blade without  
hairs*

**flower:**  
*long, bushy fox-tail shaped  
inflorescence, to 6 in. long by  
1/2 in. wide, and branched on  
robust plants;*

**flower con.:**  
*the foxtail is beset with long,  
dense, upward-pointing hairs,  
greenish to purplish, some tufts  
of hairs at the base of the fox-  
tail, often have no seeds among  
them; blooms June–October*



**fruit/seed:**  
*light yellow-green, about  
1/16 in. long*

hairy ligule, leaves  
have no hair on  
blade; hairs on  
sheath margin only

**habitat:**  
*weed of dry, often sandy, disturbed habitats*